

## 540 Female-Female Mini Valve

FITTINGS FOR COMPRESSED AIR › FITTINGS AND CONNECTIONS FOR PNEUMATIC SYSTEMS › Accessories, mini valves, silencers

Two-way chrome-plated ball valve for every hydraulic and pneumatic system.

Ideal for water, oils, compressed air.

Operating temperature: -10° 90° C

Operating pressure: 0-10 bar

Construction:

tropicalized steel screw

lever in glass-filled Nylon

OR-NBR 70 SH/A gasket

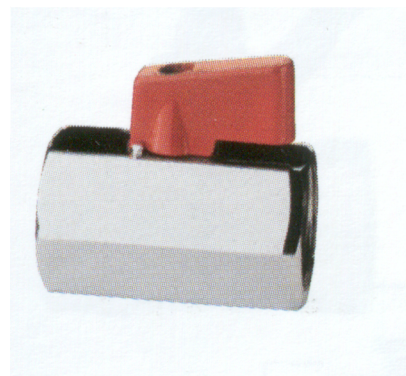
operating rod OT CW614N

sphere in thick chromed OT CW6147N UNI-EN 12164

PTFE ball seals

body in OT CW617N UNI-EN 12164 obtained from a profiled brass bar

ISO228/1 - BSPT thread



[Mastertubi.it/q?147](http://Mastertubi.it/q?147)

**BLACK or RED LEVER on request!**

item	Dimension inch	Packaging
510540001/8	1/8"	30
510540001/4	1/4"	30
510540003/8	3/8	30
510540001/2	1/2"	25
510540003/4	3/4"	15