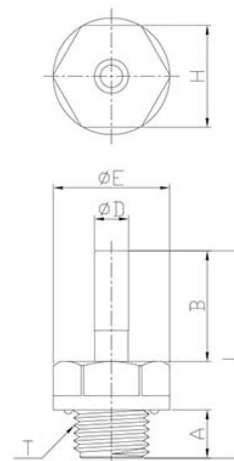


art.705 SMOOTH SHANK TERMINAL-CYLINDRICAL MALE BSPP

FITTINGS FOR THE CHEMICAL AND FOOD INDUSTRY › POM QUICK CONNECTORS - SERIES 700

| ØD | T | TO | b | ØE | L | H (HEX) | WEIGHT | CONF. |
|----|-------|------|------|------|------|---------|--------|-------|
| 4 | G1/8" | 6.0 | 18.0 | 16.6 | 32.5 | 15 | 2.7 | 100 |
| 4 | G1/4" | 8.5 | 18.0 | 20.5 | 35.0 | 18 | 4.2 | 100 |
| 6 | G1/8" | 6.0 | 19.5 | 16.6 | 34.0 | 15 | 2.8 | 100 |
| 6 | G1/4" | 8.5 | 19.5 | 20.5 | 36.5 | 18 | 4.3 | 100 |
| 8 | G1/8" | 6.0 | 21.0 | 16.6 | 35.5 | 15 | 3.0 | 100 |
| 8 | G1/4" | 8.5 | 21.0 | 20.5 | 38.0 | 18 | 4.6 | 50 |
| 8 | G3/8" | 9.0 | 21.0 | 24.2 | 38.5 | 22 | 6.2 | 50 |
| 10 | G1/4" | 8.5 | 24.0 | 20.5 | 41.0 | 18 | 5.2 | 50 |
| 10 | G3/8" | 9.0 | 24.0 | 24.2 | 41.5 | 22 | 6.8 | 50 |
| 10 | G1/2" | 12.5 | 24.0 | 28.5 | 45.0 | 26 | 10.7 | 25 |
| 12 | G3/8" | 9.0 | 28.0 | 24.2 | 45.5 | 22 | 7.3 | 20 |
| 12 | G1/2" | 12.5 | 28.0 | 28.5 | 49.0 | 26 | 11.2 | 25 |
| 15 | G1/2" | 12.5 | 36.0 | 28.8 | 57.0 | 26 | 13.8 | 25 |



Mastertubi.it/q?942