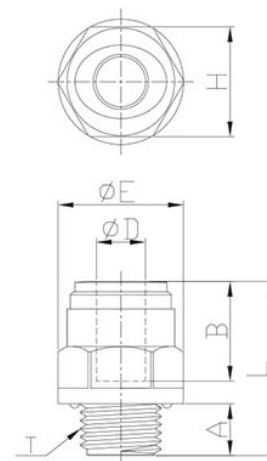


art.701 STRAIGHT CYLINDRICAL MALE

FITTINGS FOR THE CHEMICAL AND FOOD INDUSTRY › POM QUICK CONNECTORS - SERIES 700

BSPP male straight quick coupling in acetal resin

| DN PIPE | THREAD BSPP | TO | b | ØE | L | H (HEX) | WEIGHT | PACKAGING |
|---------|-------------|------|------|------|------|---------|--------|-----------|
| 4 | G1/8" | 6.0 | 14.7 | 16.6 | 2.19 | 15 | 3.3 | 100 |
| 4 | G1/4" | 8.5 | 14.7 | 20.5 | 23.9 | 18 | 4.9 | 100 |
| 6 | G1/8" | 6.0 | 16.1 | 16.6 | 24.1 | 15 | 3.3 | 100 |
| 6 | G1/4" | 8.5 | 16.1 | 20.5 | 24.1 | 18 | 4.8 | 100 |
| 8 | G1/8" | 6.0 | 17.5 | 18.5 | 27.0 | 17 | 5.2 | 100 |
| 8 | G1/4" | 8.5 | 17.5 | 20.5 | 28.5 | 18 | 6.1 | 50 |
| 8 | G3/8" | 9.0 | 17.5 | 24.0 | 26.5 | 21 | 7.0 | 50 |
| 8 | G1/2" | 12.5 | 17.5 | 28.5 | 29.5 | 26 | 11.9 | 50 |
| 10 | G1/4" | 8.5 | 20.1 | 21.1 | 30.8 | 19 | 7.2 | 50 |
| 10 | G3/8" | 9.0 | 20.1 | 24.2 | 26.3 | 21 | 7.0 | 50 |
| 10 | G1/2" | 12.5 | 20.1 | 28.5 | 29.8 | 26 | 11.3 | 25 |
| 12 | G3/8" | 9.0 | 24.7 | 27.0 | 34.2 | 24 | 11.6 | 25 |
| 12 | G1/2" | 12.5 | 24.7 | 28.5 | 32.7 | 26 | 12.4 | 25 |
| 15 | G1/2" | 12.5 | 29.4 | 28.8 | 43.4 | 26 | 17.0 | 25 |
| 15 | G3/4" | 14.5 | 29.4 | 39.0 | 39.0 | 33 | 24.5 | 20 |
| 22 | G3/4" | 14.5 | 33.8 | 37.0 | 51.0 | 33 | 28.2 | 20 |



Mastertubi.it/q?930