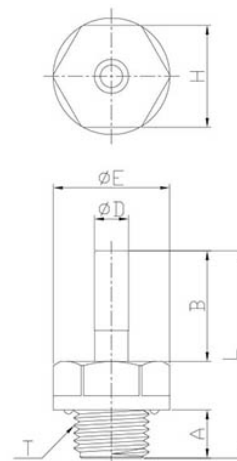


## art.705 TERMINALE CODOLO LISCIO-MASCHIO CILINDRICO BSPP

RACCORDI PER ARIA COMPRESSA › RACCORDI E CONNESSIONI PER IMPIANTI PNEUMATICI › Serie 700  
RACCORDI RAPIDI IN POM

ØD	T	A	B	ØE	L	H (HEX)	PESO	CONF.
4	G1/8"	6,0	18,0	16,6	32,5	15	2,7	100
4	G1/4"	8,5	18,0	20,5	35,0	18	4,2	100
6	G1/8"	6,0	19,5	16,6	34,0	15	2,8	100
6	G1/4"	8,5	19,5	20,5	36,5	18	4,3	100
8	G1/8"	6,0	21,0	16,6	35,5	15	3,0	100
8	G1/4"	8,5	21,0	20,5	38,0	18	4,6	50
8	G3/8"	9,0	21,0	24,2	38,5	22	6,2	50
10	G1/4"	8,5	24,0	20,5	41,0	18	5,2	50
10	G3/8"	9,0	24,0	24,2	41,5	22	6,8	50
10	G1/2"	12,5	24,0	28,5	45,0	26	10,7	25
12	G3/8"	9,0	28,0	24,2	45,5	22	7,3	20
12	G1/2"	12,5	28,0	28,5	49,0	26	11,2	25
15	G1/2"	12,5	36,0	28,8	57,0	26	13,8	25



Mastertubi.it/q?942