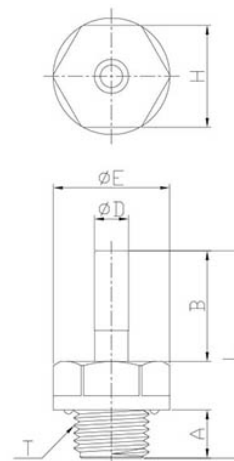


art.705 SMOOTH SHANK TERMINAL-CYLINDRICAL MALE BSPP

FITTINGS FOR COMPRESSED AIR › FITTINGS AND CONNECTIONS FOR PNEUMATIC SYSTEMS › 700 Series
POM QUICK FITTINGS

ØD	T	TO	b	ØE	L	H (HEX)	WEIGHT	CONF.
4	G1/8"	6.0	18.0	16.6	32.5	15	2.7	100
4	G1/4"	8.5	18.0	20.5	35.0	18	4.2	100
6	G1/8"	6.0	19.5	16.6	34.0	15	2.8	100
6	G1/4"	8.5	19.5	20.5	36.5	18	4.3	100
8	G1/8"	6.0	21.0	16.6	35.5	15	3.0	100
8	G1/4"	8.5	21.0	20.5	38.0	18	4.6	50
8	G3/8"	9.0	21.0	24.2	38.5	22	6.2	50
10	G1/4"	8.5	24.0	20.5	41.0	18	5.2	50
10	G3/8"	9.0	24.0	24.2	41.5	22	6.8	50
10	G1/2"	12.5	24.0	28.5	45.0	26	10.7	25
12	G3/8"	9.0	28.0	24.2	45.5	22	7.3	20
12	G1/2"	12.5	28.0	28.5	49.0	26	11.2	25
15	G1/2"	12.5	36.0	28.8	57.0	26	13.8	25



Mastertubi.it/q?942