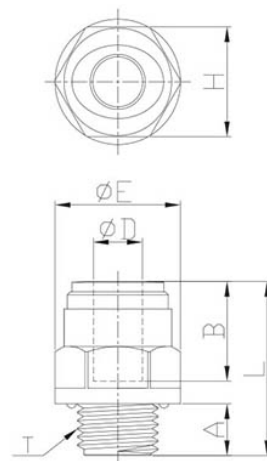


art.701 STRAIGHT CYLINDRICAL MALE

FITTINGS FOR COMPRESSED AIR › FITTINGS AND CONNECTIONS FOR PNEUMATIC SYSTEMS › 700 Series PO QUICK FITTINGS

BSPP male straight quick coupling in acetal resin

DN PIPE	THREAD BSPP	TO	b	ØE	L	H (HEX)	WEIGHT	PACKAGING
4	G1/8"	6.0	14.7	16.6	2.19	15	3.3	100
4	G1/4"	8.5	14.7	20.5	23.9	18	4.9	100
6	G1/8"	6.0	16.1	16.6	24.1	15	3.3	100
6	G1/4"	8.5	16.1	20.5	24.1	18	4.8	100
8	G1/8"	6.0	17.5	18.5	27.0	17	5.2	100
8	G1/4"	8.5	17.5	20.5	28.5	18	6.1	50
8	G3/8"	9.0	17.5	24.0	26.5	21	7.0	50
8	G1/2"	12.5	17.5	28.5	29.5	26	11.9	50
10	G1/4"	8.5	20.1	21.1	30.8	19	7.2	50
10	G3/8"	9.0	20.1	24.2	26.3	21	7.0	50
10	G1/2"	12.5	20.1	28.5	29.8	26	11.3	25
12	G3/8"	9.0	24.7	27.0	34.2	24	11.6	25
12	G1/2"	12.5	24.7	28.5	32.7	26	12.4	25
15	G1/2"	12.5	29.4	28.8	43.4	26	17.0	25
15	G3/4"	14.5	29.4	39.0	39.0	33	24.5	20
22	G3/4"	14.5	33.8	37.0	51.0	33	28.2	20



Mastertubi.it/q?930