

FLANGED RUBBER COMPENSATORS

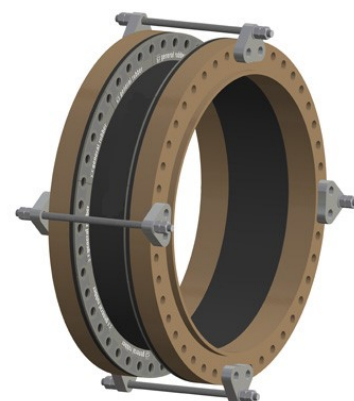
HOSES › Flanged pipes and rubber compensators

RUBBER EXPANSION COMPENSATORS ALSO CALLED JOINTS

Wide-arch rubber expansion joints are designed to absorb large all-direction movements, reduce noise and vibration, have a cycle life in the tens of millions, compensate for misalignments, provide access to piping and equipment, and relieve tension on pipes and anchors. Its spool-type body is constructed with solid rubber flanges, a high-quality watertight tube, multiple layers of high-strength tire cords, high-strength steel reinforcements, a seamless cover, and cast-in retaining rings. hot-dip galvanized steel. This construction, as a self-contained expansion joint, represents the most economical arrangement when used in rigid piping systems with main anchors (MA) and numerous specifically spaced guides. Control units can be connected externally or internally and used as limit bars for secondary containment,

Characteristics

- Standard or customized face-to-face dimensions
- Wide sliding arch design
- Exceptional directional movement ability
- Virtually eliminates sediment buildup
- Absorbs noise, vibrations and shocks
- Higher pressure than conventional expansion joints
- Standard hot-dip galvanized sealing rings
- Other standard drillings are available, including ASA 300, DIN, PN, JIS, API and Navy
- Excellent chemical and abrasion resistance
- Total vacuum rating (30"Hg) for style 1202
- Continuous service standard 120°C
- Compensates for minor misalignment and offset
- Low stiffness and deflection forces
- Fully flanged design, no gaskets required
- Simple to install and high strength
- Provides easy access to piping and equipment
- Full arch design available



Mastertubi.it/q?838