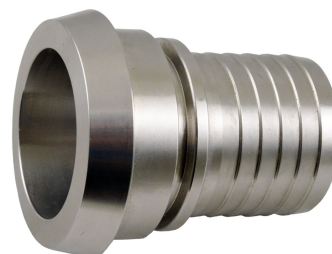


## STEAM HOSE HOLDER WITH DIN 11851 CONNECTOR

FITTINGS FOR AGRICULTURAL-INDUSTRIAL MAINTENANCE › EN14423 STEAM FITTINGS

AISI 316 STAINLESS STEEL HOSE FITTING FOR STEAM WITH UNION ACCORDING TO DIN 11851.

COMPLETE WITH SAFETY RING UNDER THE HEAD FOR ASSEMBLY OF SPANNLOC HALF-SHELLS OR PRESSED RINGS.



[Mastertubi.it/q?1544](http://Mastertubi.it/q?1544)

code	dimension	diameter hose holder mm
	DN 19	19
	DN 25	25
	DN 32	32
	DN 40	38
	DN 50	50